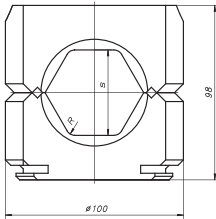
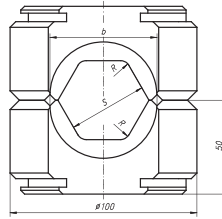
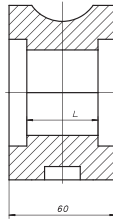


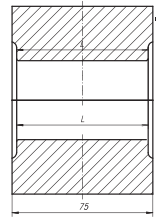
# JAWS FOR AI SLEEVE



Drawing No 1 – GPH 300



Drawing No 2 – GPH 1000



Conductor Diameter	Drawing No 1		Markings	Dimensions [mm]			Mass (Kg)
	ALKAN No's	Cat No		s	L	R	
16,0-16,3	K-32	60860-26	30-26/30 A	26	47	3	3,70
18,1	A-8	60860-28	30-28/32 A	28	47	3	3,75
26,5	A-10	60860-36	30-36/42,5 A	36	42	5	3,55
38,3	A13	60860-49	30-49/58 A	49	40	5	3,35

Conductor Diameter	Drawing No 2		Markings	Dimensions [mm]			Mass (Kg)
	ALKAN No's	Cat No		s	L	R	
16,0-16,3	K-32	60120-26	100-26/30 A	26	70	3	4,50
18,1	A-8	60120-28	100-28/32 A	28	70	3	4,40
26,5	A-10	60120-36	100-36/42,5 A	36	70	5	4,10
38,3	A13	60120-49	100-49/58 A	49	70	5	3,50

**Material:** Toughened alloy steel

**Application:** These jaws are mating parts with the GPH-300 (1) or GPH-1000 (2) head

**Notes:** One set consists of two jaws marked with the same catalogue number