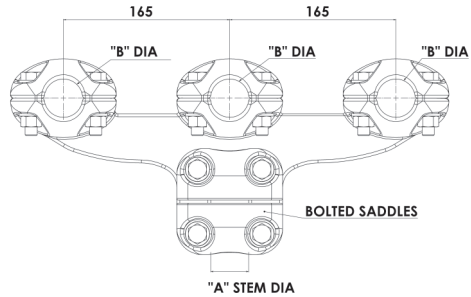
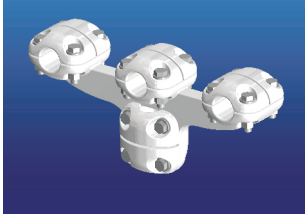


EY 3



These clamps are intended for use in conjunction with post insulators to support phase conductor bundles between items of outdoor high voltage apparatus.

They are of the bolted type designation for making connections between horizontal triple conductors and a single vertical stem. Provided that the clamp is applied correctly with reference to the current rating, this clamp can be used as a single tap off from a triple conductor bundle. They should generally only be used for non-current carrying purposes, e.g. through connections on support post insulators, voltage transformers and surge arresters as applicable.

NEW TYPE DESIGNATION	CONNECTION TO CONDUCTOR ANGLE	CONDUCTOR DIAMETER (mm)	STEM DIAM (mm)	RATED CURRENT [In] (A rms)	MAXIMUM VOLTAGE [Um] (KV rms)
EY 3 – A	0°	26.5	38	1600	300
EY 3 – B	0°	38.3	38	1600	420
EY 3 – C	90°	26.5	38	1600	300
EY 3 – D	90°	38.3	38	1600	420
EY 3 – E	0°	26.5	26	1000	300
EY 3 – F	90°	26.5	26	1000	300
EY 3 – G	90°	38.3	26	1000	420
EY 3 – H	0°	38.3	26	1000	420
EY 3 – J	0°/90°	38.3	60	2500	420

- All clamps supplied with M12 Galvanised Bolts, nuts & washers
- Recommended Torque (Nm): 45 Nm

INDEX

S - 13