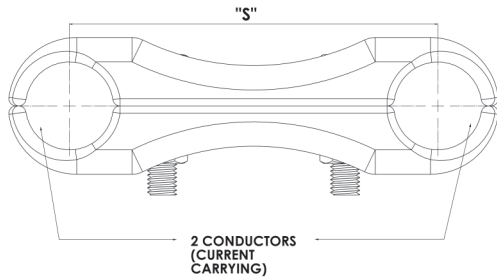
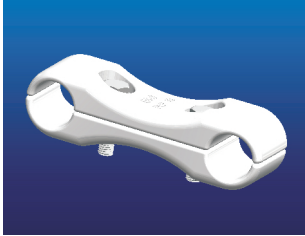


ESC (CURRENT CARRYING)



These spacers are designed to equalize the phase conductor bundle drop off points from the busbars where phase dropper conductor bundles of fewer conductors per bundle are used. They keep standard conductors at specified distances apart and are designed to withstand the forces that occur under short circuit conditions.

| NEW TYPE DESIGNATION | OLD TYPE DESIGNATION | CONDUCTOR DIAMETER (mm) | SPACING "S" (mm) | NUMBER OF CONDUCTORS | 3 - SECONDS RATED SHORT CIRCUIT CURRENT [I _f] [KV rms] | RATED CURRENT [I _n] (A rms) | MAXIMUM VOLTAGE [U _m] (KV rms) |
|----------------------|----------------------|-------------------------|------------------|----------------------|--|---|--|
| ESC – A | S10 | 26.5 | 150 | 2 | 31.5 | 900 | 300 |
| ESC – B | S11 | 38.3 | 150 | 2 | 50 | 1350 | 420 |
| ESC – C | S12 | 26.5 | 330 | 2 | 31.5 | 900 | 300 |
| ESC – D | S13 | 38.3 | 330 | 2 | 50 | 1350 | 420 |
| ESC – E | S14 | 38.3 | 165 | 3 | 50 | 1350 | 420 |