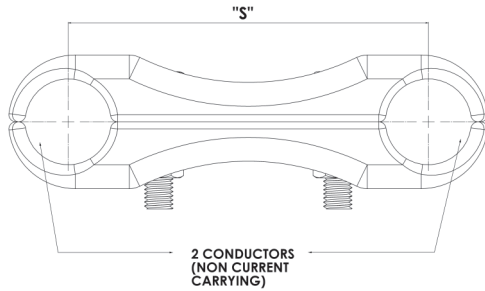
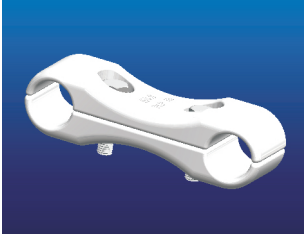


ES (NON CURRENT CARRYING)



Spacers are designed to keep standard conductors at specified distances apart and are designed to withstand the forces that occur under short circuit conditions.

NEW TYPE DESIGNATION	OLD TYPE DESIGNATION	CONDUCTOR DIAMETER (mm)	SPACING "S" (mm)	NUMBER OF CONDUCTORS	3 - SECONDS RATED SHORT CIRCUIT CURRENT [If] [KV rms]	MAXIMUM VOLTAGE [Um] (KV rms)
ES – A	S1	26.5	150	2	31.5	300
ES – B	S2	38.3	150	2	50	420
ES – C	S3	26.5	330	2	31.5	300
ES – D	S4	38.3	330	2	50	420
ES – E	S5	38.3	165	3	50	420

This product is a current & non-current carrying spacer

INDEX

S - 18

