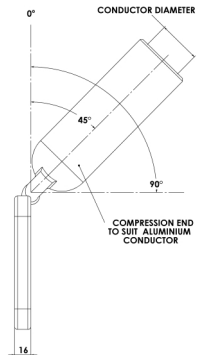
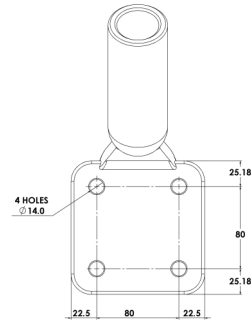
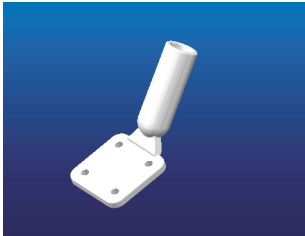
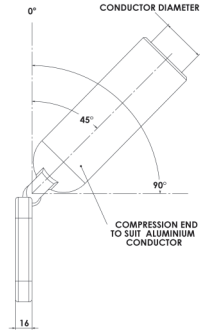
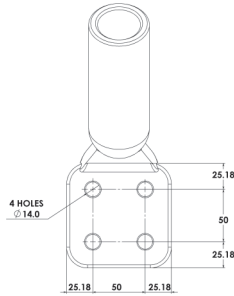
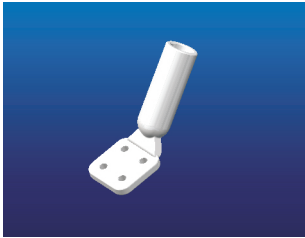


## EPC



### INDEX

S - 16



## EPC

Palm-compression clamps are designed for making connections from flat terminal pads onto single stranded conductors, the palm being bolted directly onto the terminal pad and the conductor end connected with a compression fitting.

NEW TYPE DESIGNATION	OLD TYPE DESIGNATION	CONDUCTOR DIAMETER (mm)	PAD/STEM DIMENSIONS (mm)	ANGLE OF OFF SET	RATED CURRENT [In] (A rms)	MAXIMUM VOLTAGE [Um] (KVrms)
EPC – A	SPC 1	26.5	4 X 14 DIA HOLES 50 X 50 CENTERS	0°	900	245
EPC – B	SPC 2	26.5		45°	900	245
EPC – C	SPC 3	26.5		90°	900	245
EPC – D	SPC 4	38.3	4 X 14 DIA HOLES 50 X 50 CENTERS	0°	1350	300
EPC – E	SPC 5	38.3		45°	1350	300
EPC – F	SPC 6	38.3		90°	1350	300
EPC – G	SPC 7	26.5	4 X 14 DIA HOLES 80 X 80 CENTERS	0°	900	245
EPC – H	SPC 8	26.5		45°	900	245
EPC – J	SPC 9	26.5		90°	900	245
EPC – K	SPC 10	38.3	4 X 14 DIA HOLES 80 X 80 CENTERS	0°	1350	300
EPC – L	SPC 11	38.3		45°	1350	300
EPC – M	SPC 12	38.3		90°	1350	300
EPC – N	SPC 13	26.5	UNDRILLED	0°	900	245
EPC – P	SPC 14	38.3	UNDRILLED	0°	1350	300

\* Refer to page S - 23 for the die size for Alcan Compression Fittings