

FIBERLIGN[®] Suspension

The FIBERLIGN[®] Suspension is specially designed for supporting Optical Ground Wire (OPGW) and long span designs of all-dielectric self-supported (ADSS) fiber optic cables.

The combination of the Structural Reinforcing Rods, Outer Rods, and resilient insert reduces compression and bending stress on the OPGW or ADSS at supporting structures, especially during weather related oscillations (vibration and galloping).

The Current Transfer Tab provides for electrical bonding of OPGW to the supporting structure or ground lead.

ULTIMATEVERTICAL STRENGTH. Refer to dimensional table in this section.

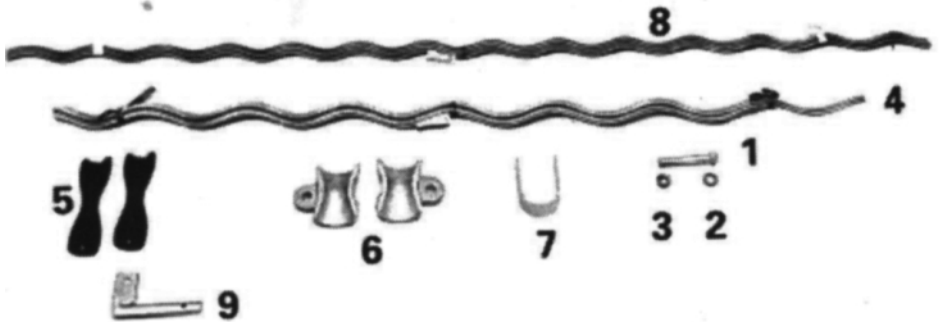
Slip Load: When initially installed, the FIBERLIGN[®] Suspension has a slip load of approximately 10-20% of a standard OPGW rated strength, but significantly higher loads can be expected after the unit has been in service for a period of time.

Line Angle: The maximum recommended line angle for a single FIBERLIGN[®] Suspension is 30°. For line angles between 30° and 60°, the FIBERLIGN[®] Suspension: Double is recommended.



INDEX
F - I

FIBERLIGN® Suspension



Based on field-proven technology, the FIBERLIGN® Suspension is specially designed for supporting Optical Ground Wire (OPGW) and other self-supported cables which contain fiber optic elements.

Side view of insert

- | | |
|----------------|--------------------------------|
| 1. Bolt | 6. Housing |
| 2. Lock washer | 7. Strap |
| 3. Hex nut | 8. Structural Reinforcing Rods |
| 4. Rods | 9. Current Transfer Tab |
| 5. Insert | |

Bolt, Washer, Hex Nut: Galvanized Steel.

Strap: High-strength Aluminum Alloy.

Insert: An elastomer specifically formulated for resistance to ozone attack, weathering, extreme high and low temperature variations, and compression set. An Aluminium Alloy reinforcement is moulded into the elastomer.

Housing: High-strength aluminum alloy casting.

Structural reinforcing rods and outer rods: High strength Aluminium Alloy.

Current Transfer Tab: High Strength Aluminium Alloy

INDEX

F - 2



Copyright 2010 Preformed Line Products • All rights reserved
Telephone: 033 397 5800 • Facsimile: 033 387 7094
Email: plppmb@preformedsa.co.za
Website: www.preformedsa.co.za

FIBERLIGN® Suspension for Optical Ground Wire (OPGW and ADSS)

CATALOGUE NO. SUFFIX FAG	DIAMETER RANGE		STRUCTURAL REINFORCEMENT RODS			OUTER RODS		
	MIN. (mm)	MAX. (mm)	LENGTH (mm)	ROD DIA. (mm)	ROD PER SET	LENGTH (mm)	ROD DIAM. (mm)	ROD PER SET
354-381	8,99	9,68	1676	3,66	9	1372	5,18	11
382-398	9,70	10,11	1676	3,66	9	1372	5,18	11
399-418	10,13	10,62	1676	3,66	10	1372	5,18	11
419-439	10,64	11,15	1702	3,66	10	1397	5,18	11
440-458	11,18	11,63	1727	3,66	11	1422	5,18	11
459-461	11,66	11,71	1829	4,06	10	1524	6,35	10
462-476	11,73	12,09	1829	4,06	1	1549	6,35	10
477-503	12,12	12,78	1829	3,66	11	1524	6,35	10
504-511	12,80	12,98	1854	3,66	12	1549	6,35	10
512-536	13,00	13,61	1930	4,06	11	1626	6,35	11
537-559	13,64	14,20	1956	4,06	11	1651	6,35	11
560-565	14,22	14,35	1956	4,06	11	1651	6,35	11
566-573	14,38	14,55	2007	4,62	11	1676	6,35	12
574-598	14,58	15,19	2007	4,62	11	1702	6,35	12
599-622	15,21	15,80	2057	4,62	11	1727	6,35	12
623-625	15,82	15,88	2057	4,62	11	1753	6,35	12
626-632	15,90	16,05	2388	5,18	11	2083	7,62	11
633-666	16,08	16,92	2388	5,18	11	2083	7,62	11
667-682	16,94	17,32	2388	5,18	11	2083	7,62	11
683-710	17,35	18,03	2388	5,18	11	2083	7,62	11
711-728	18,06	18,49	2388	5,18	12	2083	7,62	12
729-744	18,52	18,90	2388	5,18	12	2083	7,62	12
745-750	18,92	19,05	2388	5,18	12	2083	7,62	12

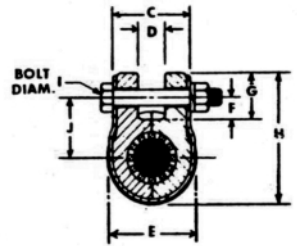
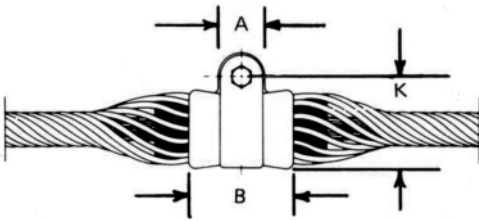
* Current Transfer Tab will only accommodate a minimum cable diameter of 9,5 mm

INDEX

F - 3

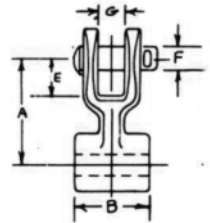
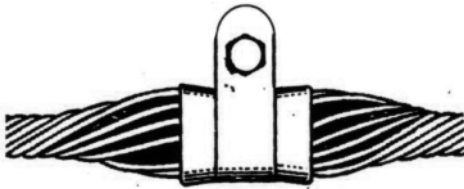


Dimensional Tables



DIAMETER RANGE		DIMENSIONS (mm)										ULTIMATE VERTICAL STRENGTH (kg)	
MIN.	MAX.	A	B	C	D	E	F	G	H	I	J	K	
8,99	11,63	44	95	57	19	71	25	47	112	16	54	90	6800
11,66	14,35	50	115	68	22	84	25	50	127	16	59	101	9000
14,38	15,88	50	127	75	22	93	25	50	136	16	64	111	9000
15,90	19,05	57	139	88	30	105	25	53	150	16	68	121	11000

Fittings Clevis Eye



DIAMETER RANGE		GENERAL DIMENSIONS							ULTIMATE VERTICAL STRENGTH (kg)	WEIGHT PER 100 UNITS (kg)
MIN.	MAX.	A	B	C	D	E	F	G		
8,99	11,63	79	12	17	38	38	16	20	6800	47
11,66	15,88	79	19	17	38	38	16	20	9000	47
15,90	19,03	79	26	20	38	38	16	20	11000	80

INDEX

F - 4



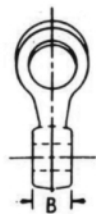
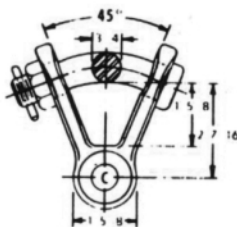
Copyright 2010 Preformed Line Products • All rights reserved

Telephone: 033 397 5800 • Facsimile: 033 387 7094

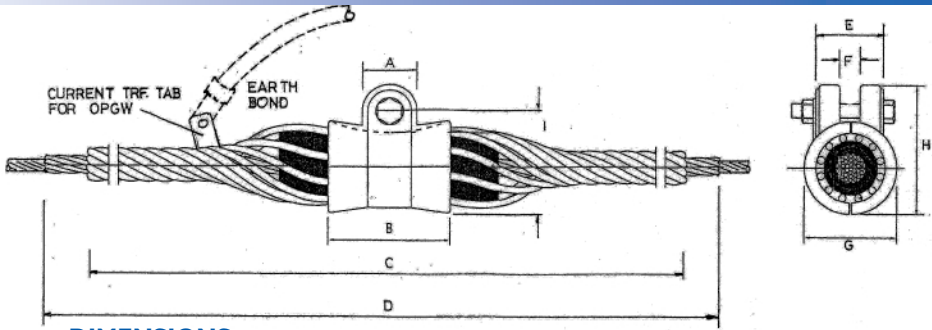
Email: plppmb@preformedsa.co.za

Website: www.preformedsa.co.za

Y-Clevis Eye



DIAMETER RANGE		GENERAL DIMENSIONS		ULTIMATE VERTICAL STRENGTH
MIN.	MAX.	B	C	(kg)
8,99	11,63	16	17	6800
11,66	15,88	19	17	9000
15,90	19,03	27	20	11000



DIMENSIONS

CATALOGUE NO.	COND O.D.	A-G RODS LENGTH C	RODS/ SET	REINFORCING RODS LENGTH D	RODS/ SET	COLOUR CODE
354/381		1068	11	1676	9	GREEN
382/398	8,99-10,60	1068	11	1676	9	BROWN
399/418		1068	11	1676	10	YELLOW
477/503		1170	10	1830	11	ORANGE
512		1626	11	1930	11	ORANGE
537/559	12,10-14,55	1651	12	1956	11	BROWN
566/573		1676	12	1956	11	BROWN
591/614	15,00-15,90	1676	12	1956	11	BLUE
599/625		1370	12	2060	11	BLUE
635	16,13-18,0	2083	11	2388	11	RED
667/710		2083	11	2388	11	YELLOW
626/666	16,9 -18	1600	11	2388	11	RED

NOTE: LAY DIRECTION: OUTER LAYER (A-G RODS) SAME AS CABLE – CUSTOMER MUST SPECIFY

DIAMETER RANGE

DIMENSIONS (MM)

MIN	MAX	A	B	E	F	G	H	I
8,99	10,6	44	95	57	19	71	112	90
12,10	14,55	50	115	68	22	84	127	101
15,00	15,90	50	127	75	22	93	136	111
16,13	18,0	57	139	88	30	105	150	121

INDEX

F - 6

OTHER SIZES ON APPLICATION



Copyright 2010 Preformed Line Products • All rights reserved
 Telephone: 033 397 5800 • Facsimile: 033 387 7094
 Email: plppmb@preformedsa.co.za
 Website: www.preformedsa.co.za