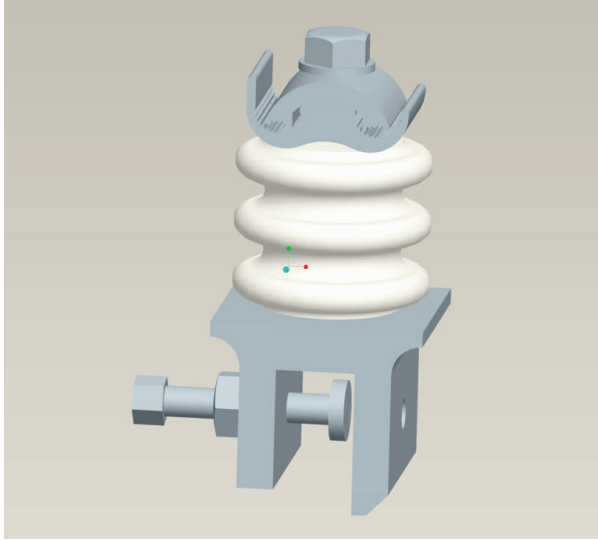


FIBERLIGN[®] Insulated Downlead Clamp



The clamp body is made from aluminium alloy, and is designed to clamp onto the angle iron member of steel towers, and to secure OPGW downleads to structures while minimising compressive clamping forces which could be transferred to the optical elements.

The fasteners are stainless steel and specially selected for this application. The unit is supplied complete with a ceramic insulator to provide insulation of OPGW.

CATALOGUE NO	DIAMETER RANGE mm	
	MIN.	MAX.
DCER 1556-1B	3.71	14.35
DCER 2674-1B	6.6	18.8

INDEX

F - 18