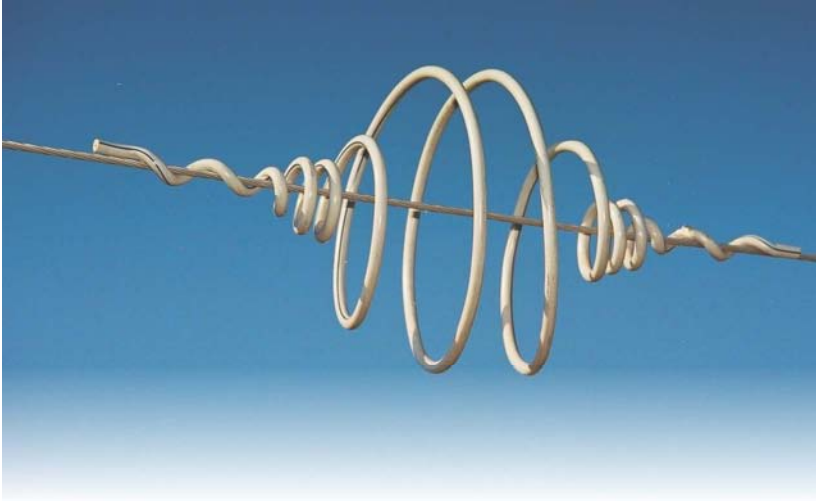


Double Loop Bird Flight Diverter



General Recommendation

The Bird Flight Diverter is designed to make overhead lines visible to birds and provides an economic means of reducing the hazard to both lines and birds. For low and medium voltage construction (up to 40kV) it is applied to the phase conductors (bare or jacketed). For high voltage it is used on the earth wire.

The fitting is light in weight, offers little wind resistance and is easily and quickly applied. The positive grip of the fitting on the conductor ensures that it remains in the applied position and cannot move along the span under vibration.

Visibility: The diverter section increases the visibility profile of the cable or conductor to a degree necessary to ensure safety, but avoids undesirably bulky outlines.

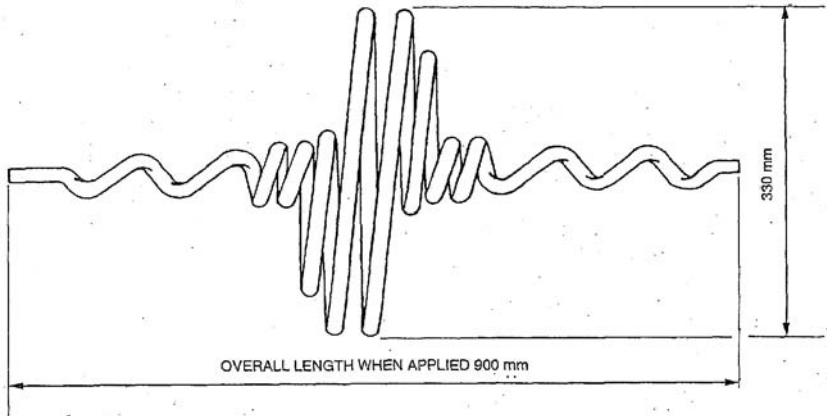
Spacing: Spacing distances are not critical and will depend upon local conditions. Since wind resistance is very limited, sufficient fittings can be used to ensure adequate visibility without creating stresses on the line. When marking adjacent spans, overall visibility is improved by staggering the application.

We recommend generally a spacing of 10 or 15 metres.

INDEX

E - 3

Double Loop Bird Flight Diverter



Material Used: Manufactured from rigid solid high impact polyvinyl chloride, possessing excellent chemical and strength properties and which will retain good physical characteristics within the range of extreme temperatures. Outdoor ageing tests indicate that the material does not deteriorate in function or appearance from the effects of severe weather conditions. Industrial fumes and salt water cannot seriously degrade the properties of rigid PVC.

Colour: White or Black

Lay Direction: Bird Flight Diverter are supplied right hand lay for both right hand and left hand lay bare conductors and insulated cables.

CATALOGUE NO.

CONDUCTOR/ E/WIRE DIA. RANGE

BFD 0914/LD2*

9 mm – 14 mm

*Add B or W to denote colour

INDEX

E - 4

