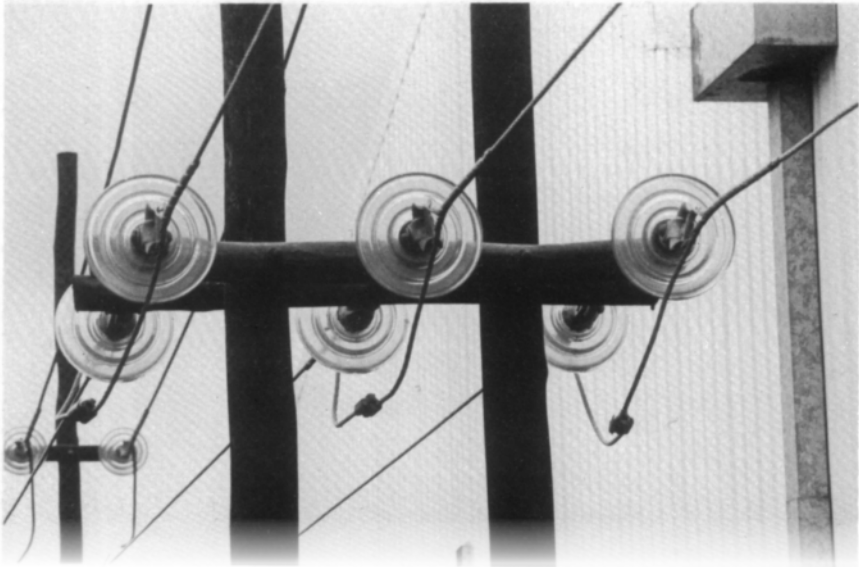


Dead End



General Recommendations

Dead-End: Bare; manufactured from similar basic material to that of the conductor to which it should be applied as used in general distribution construction.

Where conductors are of homogeneous stranding the Rated Holding Strength approximates the Rated Breaking Strength of the conductor.

On ACSR conductors the Rated Holding Strength approximates the full strength of the aluminium strands plus 10% of the steel core.

Vibration Dampers: The use of Spiral Vibration Dampers, see data in special section, should be considered for areas experiencing a history of vibration.

Application and Inspection: Dead-ends must not be re-used after original installation. Lay direction of both conductor and dead-end must be the same when terminating bare conductor. Suitable thimble clevises, described elsewhere in this catalogue, are manufactured for use with dead-ends.

PREFORMED™ Dead-Ends up to Cat. No. ADE 760 are manufactured with a cabled loop to ensure ease of application and the minimum of “stretch” after installation.

INDEX

D - 62



Copyright 2010 Preformed Line Products • All rights reserved
Telephone: 033 397 5800 • Facsimile: 033 387 7094
Email: plppmb@preformedsa.co.za
Website: www.preformedsa.co.za

Aluminium Alloy Dead-Ends

Right Hand Lay Standard.

CATALOGUE NO. ADE	CONDUCTOR DIAMETER (mm)	COLOUR CODE	RODS PER SET	SETS PER PACK	APPROX PACK MASS (kg)	APPROX LENGTH OF FITTING (mm)
135 - 140	3,43 - 3,57	White	3	50	2,0	280
141 - 147	3,58 - 3,75	Brown	3	50	2,0	310
148 - 154	3,76 - 3,93	Red	3	50	2,0	330
155 - 161	3,94 - 4,09	Orange	3	50	2,0	360
162 - 168	4,10 - 4,28	Green	4	50	2,0	370
169 - 176	4,29 - 4,48	Yellow	4	50	2,0	380
177 - 184	4,49 - 4,67	Grey	4	50	2,0	390
185 - 193	4,68 - 4,90	Red	4	50	2,0	400
194 - 202	4,91 - 5,13	Blue	4	50	3,0	410
203 - 212	5,14 - 5,38	Black	4	50	3,0	430
213 - 219	5,39 - 5,56	Green	4	50	3,0	460
220 - 228	5,57 - 5,79	White	4	50	3,0	460
229 - 239	5,80 - 6,07	Brown	4	50	3,0	480
240 - 246	6,08 - 6,25	Red	4	50	3,0	500
247 - 257	6,26 - 6,53	Orange	4	40	4,0	510
258 - 270	6,54 - 6,86	Green	4	40	4,0	530
271 - 280	6,87 - 7,11	Yellow	4	40	4,0	530
281 - 289	7,12 - 7,34	White	4	40	4,0	530
290 - 298	7,35- 7,57	Purple	5	40	4,0	530
299 - 310	7,58 - 7,87	Brown	5	30	4,0	560
311 - 325	7,88 - 8,26	Red	5	30	4,0	560
326 - 340	8,27 - 8,64	Blue	5	30	4,0	560
341 - 351	8,65 - 8,92	Orange	5	30	4,0	590
352 - 367	8,93 - 9,34	Green	6	30	5,0	610
368-380	9,35 - 9,65	Black	6	30	5,0	610

INDEX

D - 63



Aluminium Alloy Dead-Ends

Right Hand Lay Standard.

CATALOGUE NO. ADE	CONDUCTOR DIAMETER (mm)	COLOUR CODE	RODS PER SET	SETS PER PACK	APPROX PACK MASS (kg)	APPROX LENGTH OF FITTING (mm)
381 - 398	9,66-10,12	Yellow	5	30	5,0	660
399 - 413	10,13 -10,49	Grey	5	30	5,0	670
414 - 425	10,50 - 10,81	Brown	5	30	5,0	710
426 - 443	10,82 - 11,25	Red	6	30	6,0	710
444 - 462	11,26 - 11,74	Blue	6	30	5,0	740
463 - 481	11,75 - 12,22	Green	6	30	8,0	810
482 - 503	12,23 - 12,78	Orange	6	20	8,0	830
504 - 521	12,79 - 13,24	Black	5	15	5,0	860
522 - 544	13,25 - 13,82	Grey	6	20	10,0	880
545 - 567	13,83 - 14,40	Brown	6	20	8,0	950
568 - 594	14,41 - 15,09	Blue	6	10	8,0	990
595 - 618	15,10 -15,70	Yellow	6	10	8,0	1050
619 - 644	15,71 - 16,35	Orange	6	10	8,0	1100
645 - 671	16,36 - 17,04	Green	6	10	9,0	1200
672 - 700	17,05 - 17,78	Yellow	6	5	5,0	1240
701 - 729	17,79 - 18,52	White	6	5	5,0	1270
730 - 760	18,53 - 19,30	Black	6	5	5,0	1300

INDEX

D - 64



Copyright 2010 Preformed Line Products • All rights reserved
 Telephone: 033 397 5800 • Facsimile: 033 387 7094
 Email: plppmb@preformedsa.co.za
 Website: www.preformedsa.co.za

Copper Alloy Dead-Ends

Right Hand Lay Standard.

CATALOGUE NO. CDE	CONDUCTOR DIAMETER (mm)	COLOUR CODE	RODS PER SET	SETS PER PACK	APPROX PACK MASS (kg)	APPROX LENGTH OF FITTING (mm)
192 - 200	4,90 - 5,10	Red	5	40	10	400
201 - 211	5,11 - 5,37	Orange	5	40	10	400
212 - 230	5,38 - 5,84	Yellow	5	40	10	430
232 - 258	5,85 - 6,55	White	5	40	10	430
259 - 291	6,56 - 7,27	Orange	5	40	12	480
292 - 324	7,28 - 8,23	Blue	5	30	12	530
325-364	8,24 - 9,25	Brown	5	10	8	600
365 - 409	9,26 - 10,39	Black	5	10	10	680
41 - 459	10,40 - 11,66	Blue	5	10	10	730
460 - 515	11,67 - 13,08	White	5	10	14	840
516 - 570	13,09 - 14,48	Green	5	10	17	890
571 - 635	14,49 - 16,13	Blue	5	5	12	910
636 - 661	16,14 -16,79	Yellow	5	5	12	940

INDEX

D - 65